

# **AS 2865 – 2009**

# **CONFINED SPACES**

## **OBJECT OF TODAY'S PRESENTATION**

- ❖ Major amendments to AS 2865-2009
- ❖ Some practical guidance on applying the Standard

## **MAJOR AMENDMENTS TO AS 2865 – 2009**

- ❖ The Standard no longer applies to excavation and trenching.
- ❖ The definition of a confined space no longer recognises the following as criteria for defining a confined space:
  - Atmospheric pressure during entry
  - A place of work (replaced with human occupancy)
  - Restricted means for entry and exit

## **MAJOR AMENDMENTS TO AS 2865 – 2009**

- ❖ The definition expanded to cover:
  - air borne contaminants that may cause impairment, loss of consciousness or asphyxiation
  - engulfment in free flowing solids or a rising level of liquid
- ❖ Figure 1 & Table 1 introduced to give guidance in identifying a confined space.
- ❖ The concept of task-related hazards introduced.

## **MAJOR AMENDMENTS TO AS 2865 – 2009**

- ❖ Clarification of what constitutes reclassifying a confined space.
- ❖ An option that if a standby person is not assigned then systems of work methods and controls are implemented that provide an equal or better safety outcome to that provided by a standby person.
- ❖ Appendix D - Guidance for the provision of training and competency assessment.

## Definition of a confined space

An enclosed or partially enclosed space that is not intended or designed primarily for human occupancy, within which there is a risk of one or more of the following:

- (a) an oxygen concentration outside the safe oxygen range.
- (b) a concentration of airborne contaminant that may cause impairment, loss of consciousness or asphyxiation.
- (c) a concentration of flammable airborne contaminant that may cause injury from fire or explosion.
- (d) engulfment in a stored free-flowing solid or a rising level of liquid that may cause suffocation or drowning.

AS 2865 – 2009 does **NOT** apply to:

- underground mining
- tunnelling
- abrasive blasting
- spray painting
- trenching
- excavation work

## ATMOSPHERIC PRESSURE DURING ENTRY

- Many confined spaces are not at atmospheric pressure when in service
- Establishing atmospheric pressure for entry is a control measure

## A PLACE OF WORK

- All State OH&S statutes contain a definition of a place of work
- Working in a confined space can literally make the space a “place of work”

## RESTRICTED MEANS OF ENTRY & EXIT

- Some confined spaces have unrestricted entries and/or exits other have not
- The term "restricted" is a subjective judgement
- A restricted means of entry & exit may make it difficult to access and egress and increase emergency response times

## ENGULFMENT (AS 2865-2009 definition)

The immersion or envelopment of a person by a solid or liquid, (which may include grain, sugar, flour, sand, coal, fertilizer and other substances in a powder or granular form).

FIGURE 1 - IDENTIFYING A CONFINED SPACE

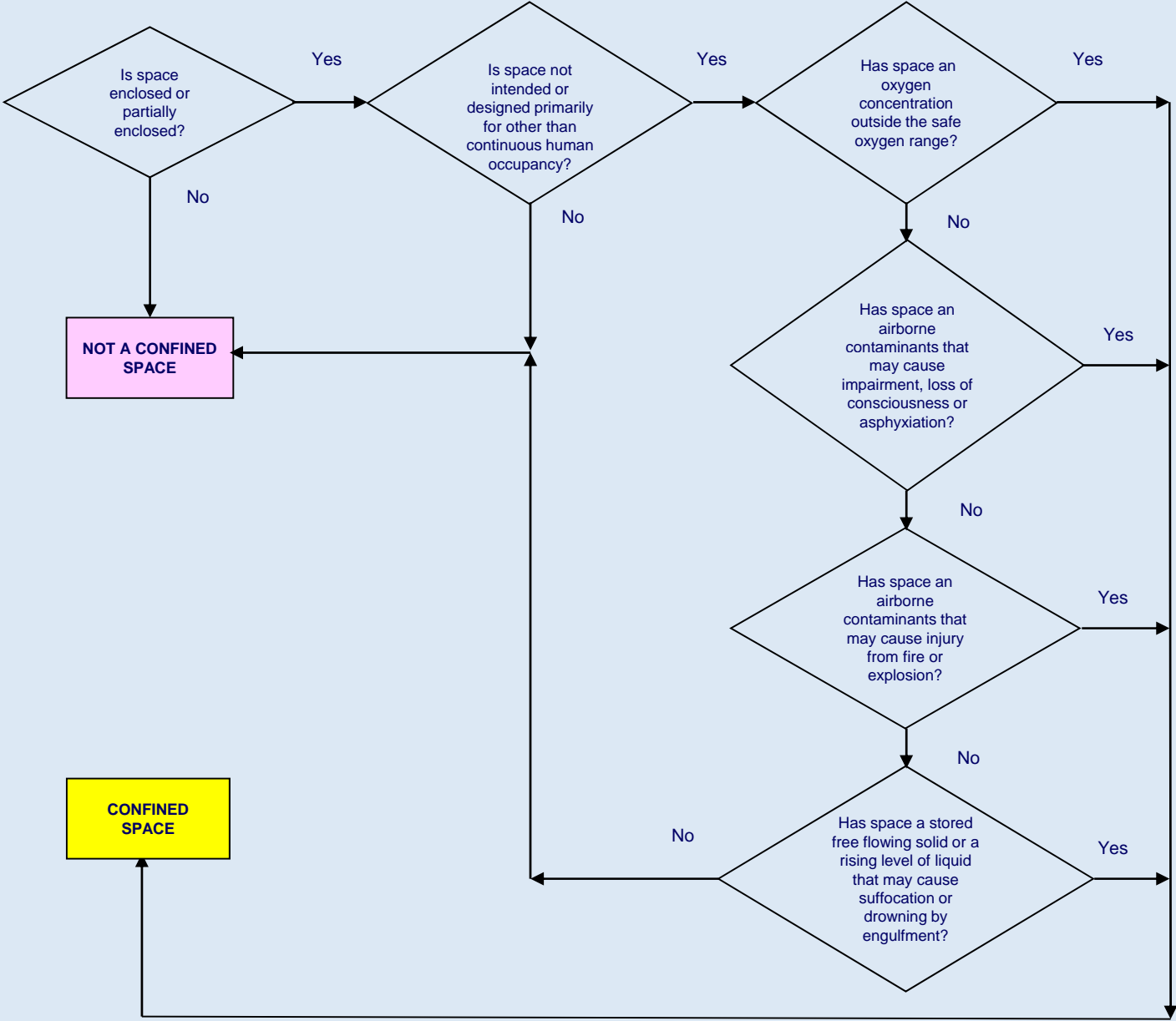


TABLE 1  
SAMPLE CONFINED SPACE HAZARD IDENTIFICATION MATRIX

Description of space	Physical Characteristic		Identified Hazards				Is the enclosed or partially enclosed space a potential confined space?
	Step A	Step B	Step C	Step D	Step E	Step F	
	Is space enclosed or partially enclosed space?	Is space intended or designed primarily for other than human occupancy?	Could the atmosphere have oxygen concentration outside the safe oxygen range?	Could the atmosphere have a concentration of airborne contaminant that may cause impairment, loss of consciousness	Could the atmosphere have a concentration of flammable airborne contaminant that may cause injury from fire or	Could the space have a stored free flowing solid or a rising level of liquid that may cause suffocation or drowning?	
Requires A and B			Required to have either C, D, E, or F				
Sewerage pit	NO	NO	NO	NO	NO	NO	NO
Workshop welding bay	NO	NO	NO	NO	NO	NO	NO
Boiler	NO	NO	NO	NO	NO	NO	NO

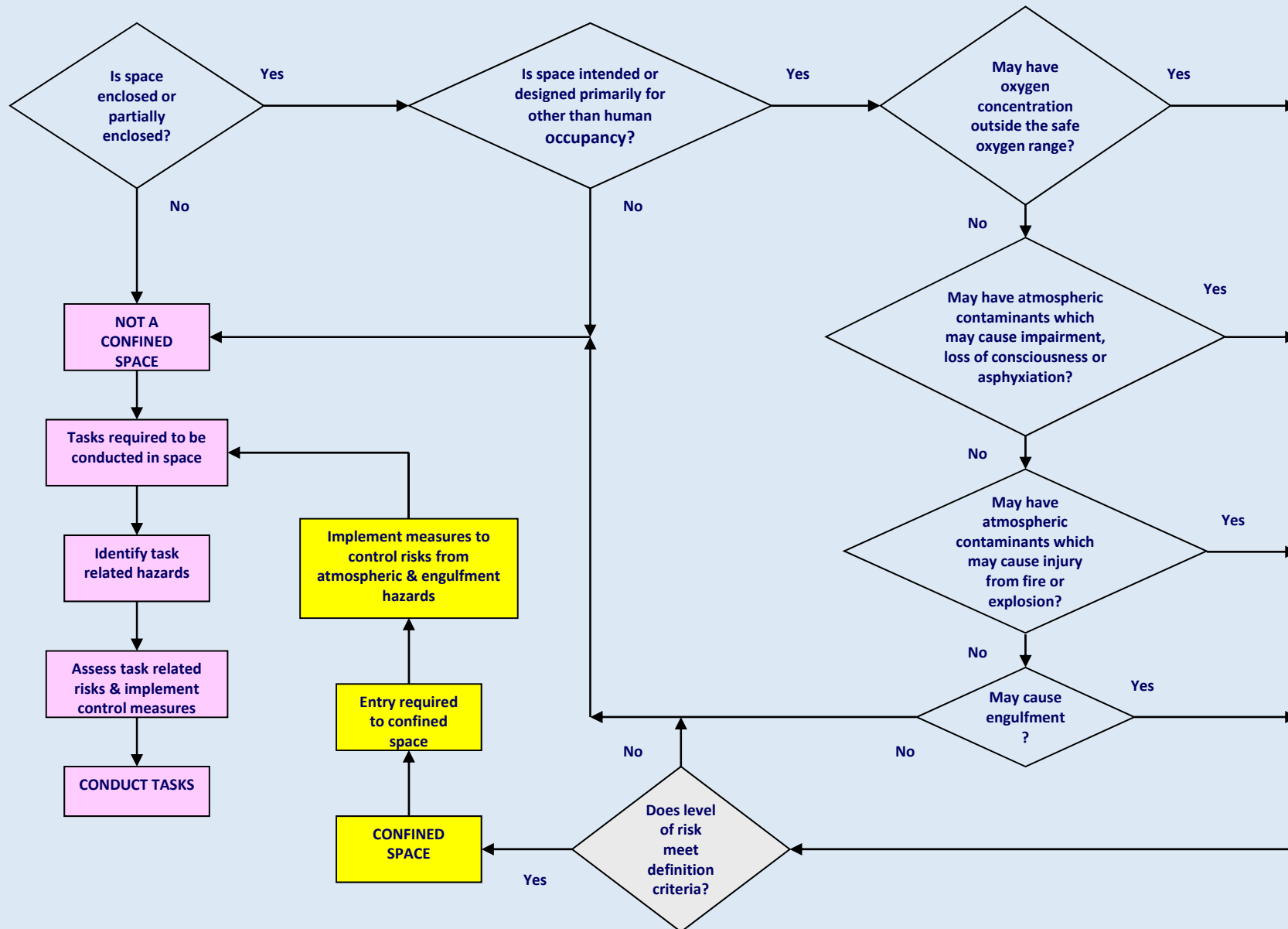
..\Confined Spaces\2865 Review\Flow Diagrams & ID Matrix\2009 CS Test Matrix.xls - Sheet1!B1

## TASK-RELATED HAZARD (AS 2865-2009 definition)

In respect to a confined space means exposure to a hazard as a consequence of the task being conducted on or in a confined space.

- Confined space task-related hazards are identified & assessed the same as any other workplace activity.

**CONFINED SPACE HAZARD IDENTIFICATION, RISK ASSESSMENT AND CONTROL FLOW DIAGRAM for AS 2865-2009**



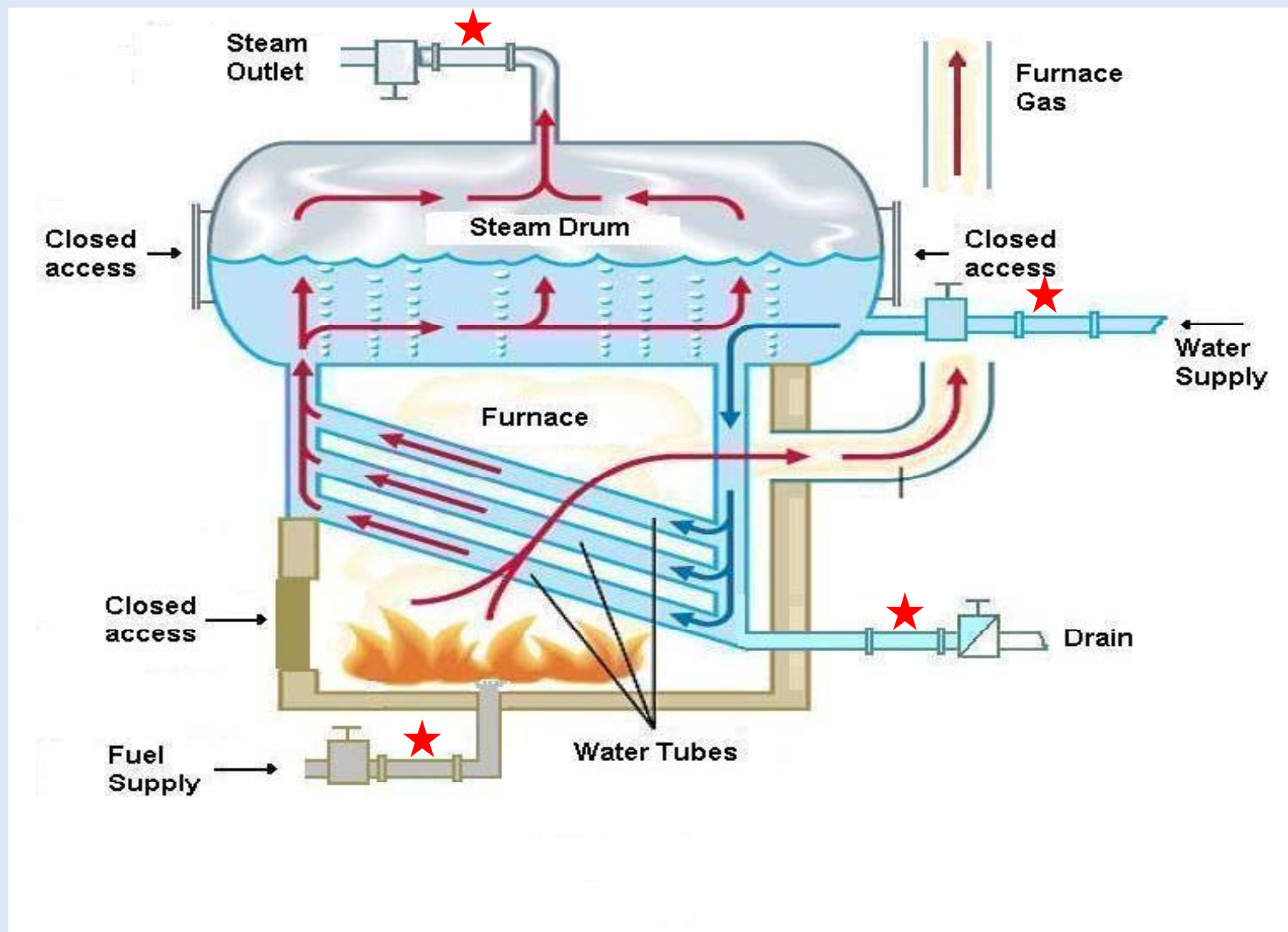
## **Confined Space entry monitoring**

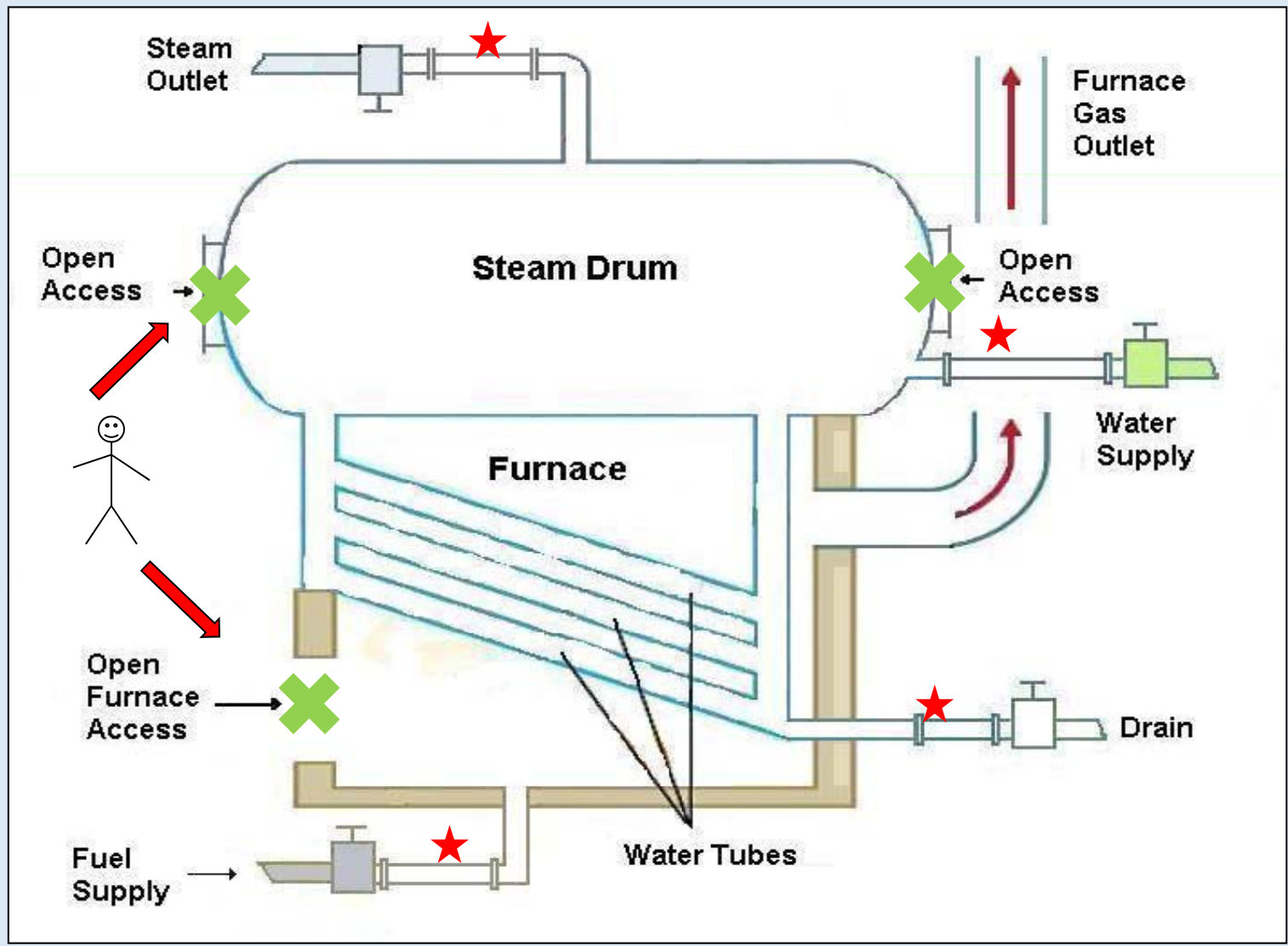
Risk control measures shall require—

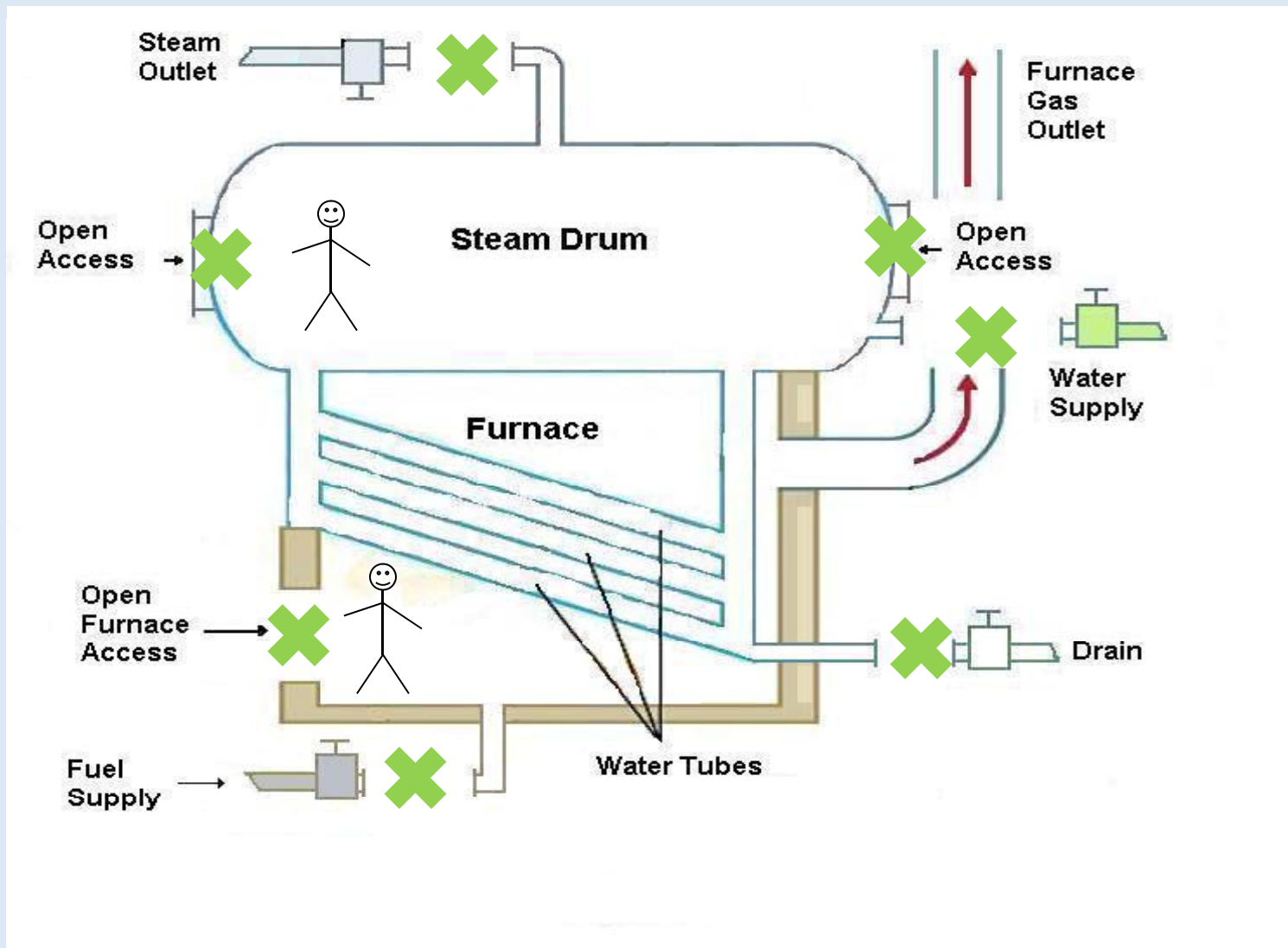
- ❖ provision of a standby person or persons; or
- ❖ systems of work methods and controls that provide an equal or better safety outcome to that provided by a standby person.

## RECLASSIFICATION OF A CONFINED SPACE

For a confined space to be reclassified to a non confined space it needs to have undergone sufficient changes in structure or usage to eliminate (without the need for risk control measures) all possible sources of inherent hazards that define a confined space.







**TABLE D1**  
**RECOMMENDED CORE TRAINING ELEMENTS**  
**AND PERFORMANCE CRITERIA**

<b>Core training element</b>	<b>Performance criteria</b>	<b>Broad roles (Refer to Paragraph D2)</b>
1. Demonstrate an understanding of legislation, standards & codes of practice relevant to confined spaces.	<p>1.1 Identify legislation, standards and codes of practice relevant to designers, manufacturers, installers, modifiers and users of confined spaces.</p> <p>1.2 Describe the responsibilities and obligations relevant to designers, manufacturers, installers, modifiers and users of confined spaces.</p>	<p>a, b, c, d, e, f</p> <p>a, b, c, d, e, f</p>

Questions ?